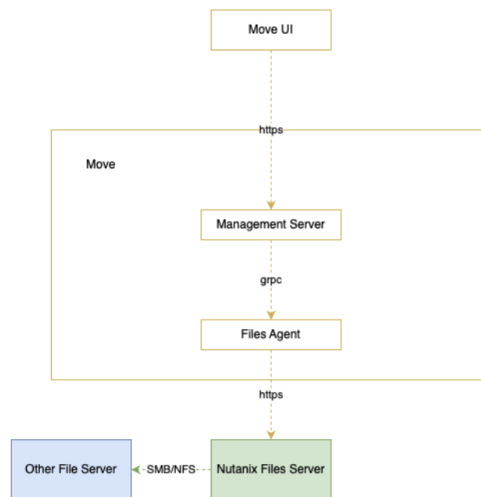


Migrating to Nutanix - Files Migration

[PDF generated September 26 2024. For all recent updates please see the Nutanix Bible releases notes located at https://nutanixbible.com/release_notes.html. Disclaimer: Downloaded PDFs may not always contain the latest information.]

Files Migration Architecture

- Move is the Control Plane
- Nutanix Files is the Data Plane
- Move orchestrates files migration using the Nutanix Files v4 APIs and Nutanix Files performs the data copy from the source using SMB or NFS
- The same Move appliance can perform both files and VM migrations



Prerequisites

Prerequisites for Move File Migration

- Move version 5.0 and later support file migration
- Move should be able to reach the destination Nutanix Files server over TCP port 9440

Prerequisites on Target Nutanix Files Server

- Files 4.4 and later (migration API support added in Files 4.4)
- Configure API user with username and password
- NFS/SMB access to source server network from target Nutanix Files server
- Target share should not have MaxSize (storage limit) configured

Prerequisites for SMB Source (From Files)

- Username and password for the backup operator
- SMB version 2 and above

Prerequisites for NFS Source

- Disable **root squash** for share to be migrated.

- Make sure **sys_auth** is supported for share to be migrated
- NFS V3 is supported

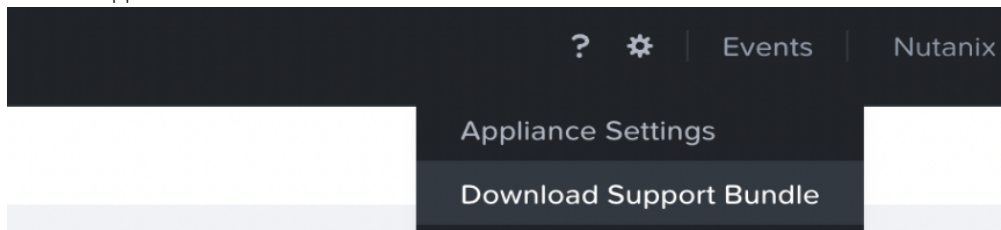
Best Practices

- Currently, only five concurrent migrations are allowed. So, only five share/share paths can be migrated in parallel
- Perform a small number of migrations and complete them before starting others. This will ensure the shortest cutover time.
- Move will run an incremental sync iteration every 24 hours.
- Source share should be in read-only mode before triggering cutover. During cutover, Move will perform the final sync iteration and complete the migration.
- Pausing a Migration Plan, which has ongoing sync iteration, doesn't free up the parallel pipe for other migrations. It is advisable to pause the migration after the ongoing iteration has finished.

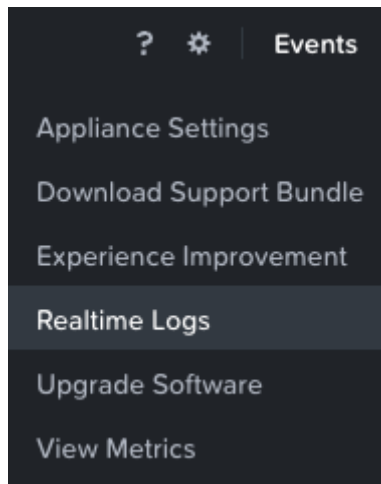
Troubleshooting

Support Bundle Collection

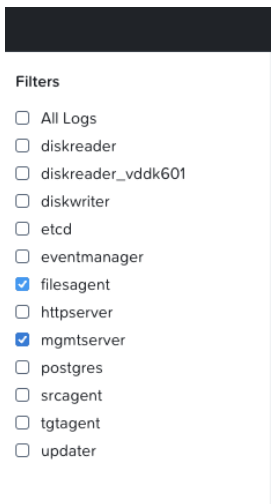
- Download the Move Support Bundle from the UI



- Download Realtime Logs from the UI



- Choose the filesagent and mgmtserver filters



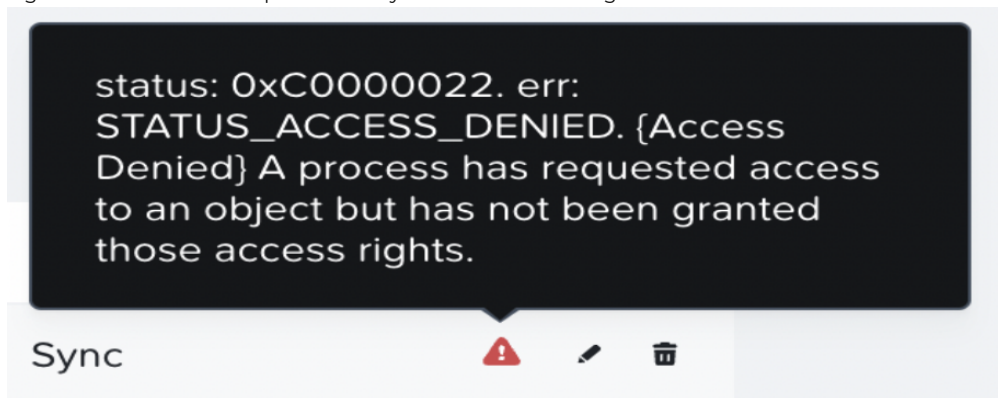
• Log files location

◦ /opt/xtract-vm/logs

```
Alpine Linux v3.16 (3.16.2) - Nutanix Move
Welcome to Nutanix Move. Please refer to the Move documentation
to know more about the console usage and troubleshooting.
https://www.nutanix.com/products/move/
admin@move on ~ $ rs
[sudo] password for admin:
root@move on ~ $ cd /opt/xtract-vm/logs/
root@move on /opt/xtract-vm/logs $ ls filesagent.log
filesagent.log
root@move on /opt/xtract-vm/logs $ ls mgmtserver.log
mgmtserver.log
root@move on /opt/xtract-vm/logs $
```

• The Move service for files migration is filesagent

• When SMB migration fails due to user permissions you'll see the following



◦ Solution: Add user to the backup operator group

• NFS migration fails with auth type sys is not configured

Failed to create NFS handle with sys auth,
Source share path either does not exist or
not accessible over NFSv3 protocol with
auth type as Sys.

Sync



- Solution: Change authentication to system